

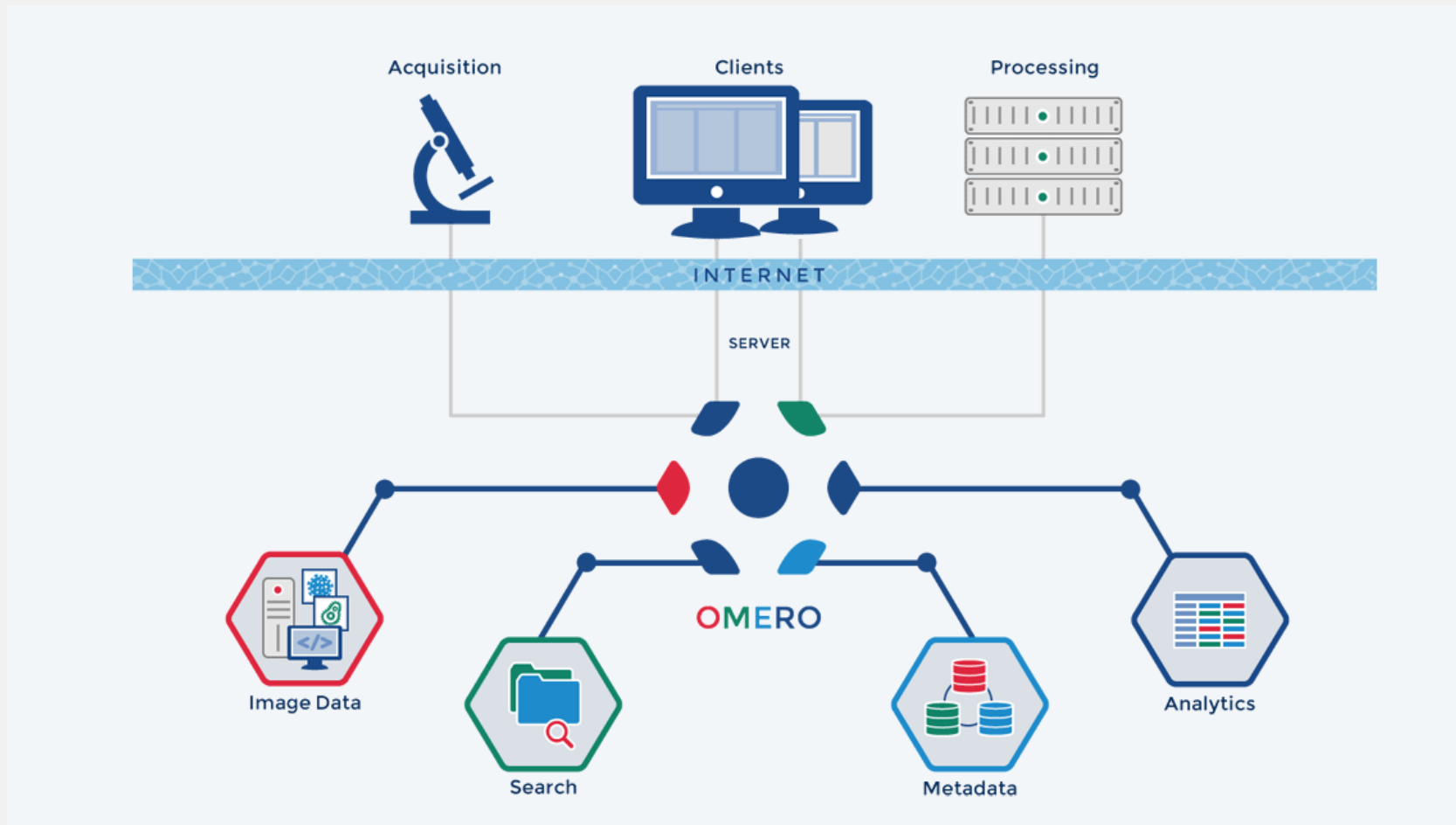
OMERO - eLabFTW

OMERO Plattform

Repositoryum speziell für Mikroskopiedaten

➤ Verwaltetes Datenarchiv mit Datenbankinfrastruktur

OMERO Plattform

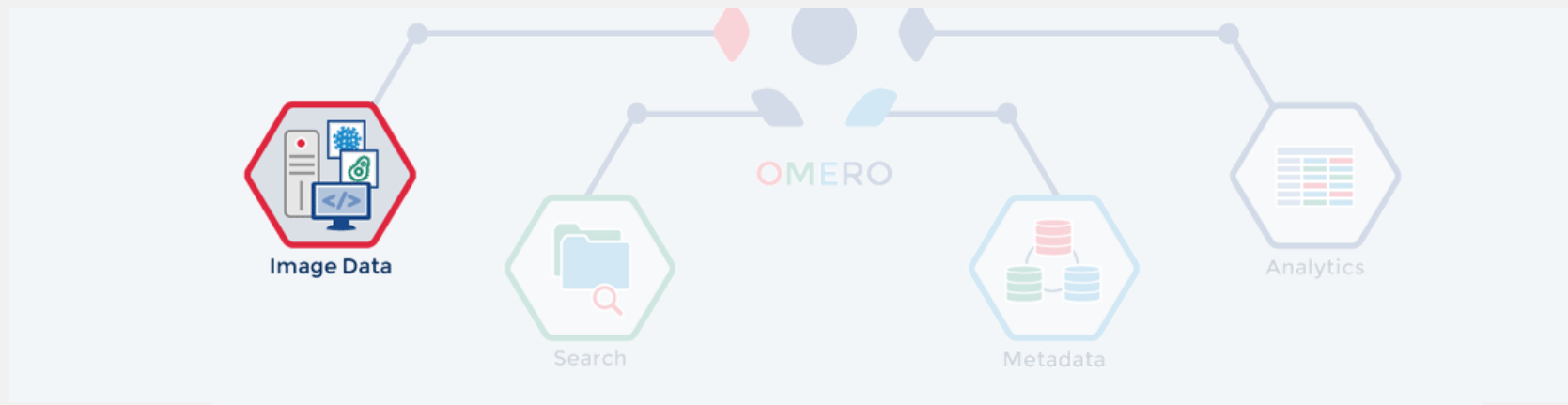


<https://downloads.openmicroscopy.org/presentations/2021/GBI/OMERO-workshop/#/3>

Mikroskopiedaten

Bio-Formats:

- Java – basierte Bibliothek
- Konvertiert proprietäre Dateiformate
- Unterstützt > 150 Bildformate
- Auslesen der Bilddaten und Metadaten
- Domains: Biologie, Medizin, Allgemein (png,tiff,etc.)

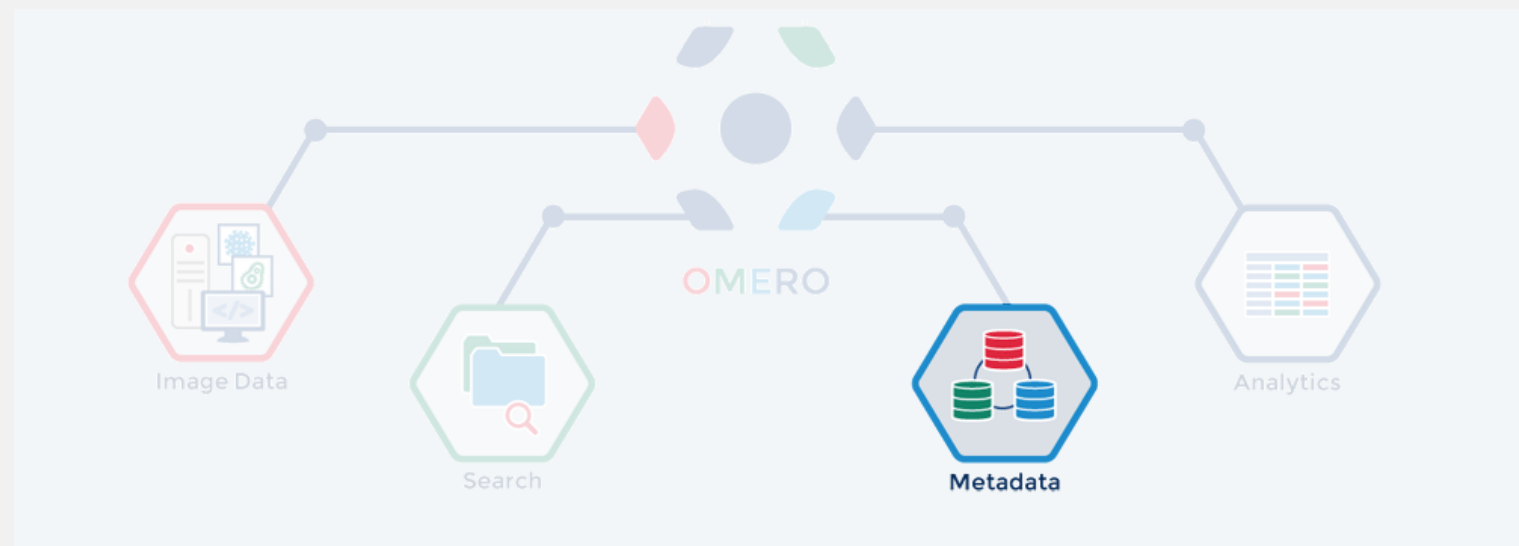


<https://downloads.openmicroscopy.org/presentations/2021/GBI/OMERO-workshop/#/4>

Metadaten

Gespeichert in relationaler Datenbank:

- Technische Metadaten -> Bio-Formats
- Annotation durch Benutzer
- ROIs /Segmentationen



<https://downloads.openmicroscopy.org/presentations/2021/GBI/OMERO-workshop/#/5>

OMERO Data History Help Figure Tag Search iBiOs Booked ServiceChat Search: Susanne Kunis (na)

Training Susanne Kunis (na) Thumbnails

Explore Tags Shares Add filter

Susanne Kunis (na)

- Data 5
- FeatureTest
- Fiji 4
- idr0021 10
 - CDK5RAP2-C 33
 - ...5_20110506_Fri-1545_0_SIR_PRJ.dv
 - ...5_20110506_Fri-1559_0_SIR_PRJ.dv
 - ...5_20110506_Fri-1608_0_SIR_PRJ.dv
 - ...5_20110506_Fri-1620_0_SIR_PRJ.dv
 - ...5_20110506_Fri-1633_0_SIR_PRJ.dv
 - ...5_20110506_Fri-1643_0_SIR_PRJ.dv
 - ...5_20110506_Fri-1648_0_SIR_PRJ.dv
 - ...20110506_Fri-1701_0_SIR_PRJ.dv
 - ...20110506_Fri-1713_0_SIR_PRJ.dv
 - ...20110506_Fri-1721_0_SIR_PRJ.dv
 - ...20110506_Fri-1726_0_SIR_PRJ.dv
 - ...20110506_Fri-1733_0_SIR_PRJ.dv
 - ...20110506_Fri-1740_0_SIR_PRJ.dv
 - ...20110506_Fri-1751_0_SIR_PRJ.dv
 - ...20110505_Thu-1216_0_SIR_PRJ.dv
 - ...20110505_Thu-1241_0_SIR_PRJ.dv
 - ...20110505_Thu-1331_0_SIR_PRJ.dv
 - ...20110505_Thu-1403_0_SIR_PRJ.dv
 - ...20110505_Thu-1436_0_SIR_PRJ.dv
 - ...20110505_Thu-1441_0_SIR_PRJ.dv
 - ...20110505_Thu-1504_0_SIR_PRJ.dv
 - ...20110505_Thu-1511_0_SIR_PRJ.dv
 - ...20110505_Thu-1516_0_SIR_PRJ.dv
 - ...20110505_Thu-1529_0_SIR_PRJ.dv
 - ...20101116_Tue-1159_1_SIR_PRJ.dv
 - ...20101116_Tue-1242_1_SIR_PRJ.dv
 - ...20101116_Tue-1246_1_SIR_PRJ.dv

Zoom:

General Acquisition Preview ExternalAccess

1545_0_SIR_PRJ.dv

Image ID: 1074766
Owner: Susanne Kunis (na) Show all

Image Details

Add Description

Import Date: 2020-08-19 13:47:39
Dimensions (XY): 256 x 256
Pixels Type: float
Pixels Size (XYZ) (µm): 0.04 x 0.04 x 0.13
Z-sections/Timepoints: 1 x 1
Channels: 442.0, 525.0, 615.0
ROI Count: 0
Image Size: 768 KB

Tags 0

Key-Value Pairs 6

openmicroscopy.org/mapr/gene
Added by: Susanne Kunis (na)

Gene Identifier	ENSG00000136861
Gene Identifier URL	http://www.ensembl.org/id/ENSG00000136861
Gene Symbol	CDK5RAP2

openmicroscopy.org/mapr/gene/supplementary
Added by: Susanne Kunis (na)

Gene Symbol Synonyms	CEP215
Gene Annotation Comments	Gene identifiers and symbols from GRCh38.p5, Ensembl release 84, Mar 2016. Added by IDR curators.
Antibody Target	CDK5RAP2-C
Targeted Protein	CDK5RAP2

Tables

Attachments 0

Comments 0

OMERO Data History Help Figure Tag Search iBiOs Booked ServiceChat

Search: Susanne Kunis (na)

Training Susanne Kunis (na)

Explore Tags Shares Add filter

Susanne Kunis (na)

- Data 5
- FeatureTest
- Fiji 4
- idr0021 10
- CDK5RAP2-C 33
 - ...5_20110506_Fri-1545_0_SIR_PRJ.dv
 - ...5_20110506_Fri-1559_0_SIR_PRJ.dv
 - ...5_20110506_Fri-1608_0_SIR_PRJ.dv
 - ...5_20110506_Fri-1620_0_SIR_PRJ.dv
 - ...5_20110506_Fri-1633_0_SIR_PRJ.dv
 - ...5_20110506_Fri-1643_0_SIR_PRJ.dv
 - ...5_20110506_Fri-1648_0_SIR_PRJ.dv
 - ...20110506_Fri-1701_0_SIR_PRJ.dv
 - ...20110506_Fri-1713_0_SIR_PRJ.dv
 - ...20110506_Fri-1721_0_SIR_PRJ.dv
 - ...20110506_Fri-1726_0_SIR_PRJ.dv
 - ...20110506_Fri-1733_0_SIR_PRJ.dv
 - ...20110506_Fri-1740_0_SIR_PRJ.dv
 - ...20110506_Fri-1751_0_SIR_PRJ.dv
 - ...20110505_Thu-1216_0_SIR_PRJ.dv
 - ...20110505_Thu-1241_0_SIR_PRJ.dv
 - ...20110505_Thu-1331_0_SIR_PRJ.dv
 - ...20110505_Thu-1403_0_SIR_PRJ.dv
 - ...20110505_Thu-1436_0_SIR_PRJ.dv
 - ...20110505_Thu-1441_0_SIR_PRJ.dv
 - ...20110505_Thu-1504_0_SIR_PRJ.dv
 - ...20110505_Thu-1511_0_SIR_PRJ.dv
 - ...20110505_Thu-1516_0_SIR_PRJ.dv
 - ...20110505_Thu-1529_0_SIR_PRJ.dv
 - ...20101116_Tue-1159_1_SIR_PRJ.dv
 - ...20101116_Tue-1242_1_SIR_PRJ.dv
 - ...20101116_Tue-1246_1_SIR_PRJ.dv

1045_U_SIR_PRJ.dv

General Acquisition Preview ExternalAccess

Image ID: 1074766
Owner: Susanne Kunis (na) Show all

Core Metadaten

Import Date:	2020-08-19 13:47:39
Dimensions (XY):	256 x 256
Pixels Type:	float
Pixels Size (XYZ) (µm):	0.04 x 0.04 x 0.13
Z-sections/Timepoints:	1 x 1
Channels:	442.0, 525.0, 615.0
ROI Count:	0
Image Size:	768 KB

Tags 0

Key-Value Pairs 6

openmicroscopy.org/mapr/gene
Added by: Susanne Kunis (na)

Gene Identifier	ENSG00000136861
Gene Identifier URL	http://www.ensembl.org/id/ENSG00000136861
Gene Symbol	CDK5RAP2

openmicroscopy.org/mapr/gene/supplementary
Added by: Susanne Kunis (na)

Gene Symbol Synonyms	CEP215
Gene Annotation Comments	Gene identifiers and symbols from GRCh38.p5, Ensembl release 84, Mar 2016. Added by IDR curators.
Antibody Target	CDK5RAP2-C
Targeted Protein	CDK5RAP2

Tables

Attachments 0

Comments 0

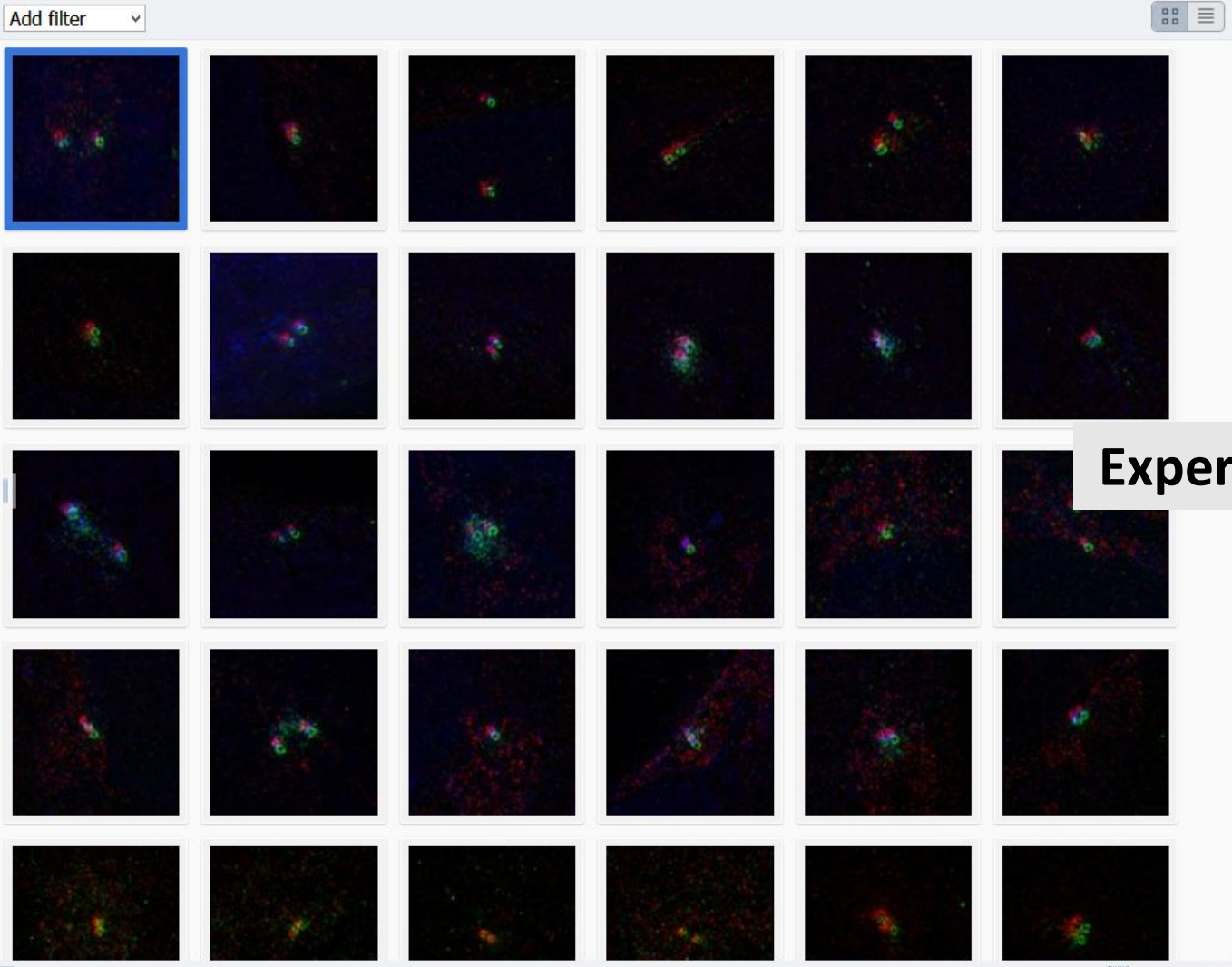
Zoom:

Training Susanne Kunis (na)

Explore Tags Shares

Susanne Kunis (na)

- Data 5
- FeatureTest
- Fiji 4
- idr0021 10
- CDK5RAP2-C 33
 - ...5_20110506_Fri-1545_0_SIR_PRJ.dv
 - ...5_20110506_Fri-1559_0_SIR_PRJ.dv
 - ...5_20110506_Fri-1608_0_SIR_PRJ.dv
 - ...5_20110506_Fri-1620_0_SIR_PRJ.dv
 - ...5_20110506_Fri-1633_0_SIR_PRJ.dv
 - ...5_20110506_Fri-1643_0_SIR_PRJ.dv
 - ...5_20110506_Fri-1648_0_SIR_PRJ.dv
 - ...20110506_Fri-1701_0_SIR_PRJ.dv
 - ...20110506_Fri-1713_0_SIR_PRJ.dv
 - ...20110506_Fri-1721_0_SIR_PRJ.dv
 - ...20110506_Fri-1726_0_SIR_PRJ.dv
 - ...20110506_Fri-1733_0_SIR_PRJ.dv
 - ...20110506_Fri-1740_0_SIR_PRJ.dv
 - ...20110506_Fri-1751_0_SIR_PRJ.dv
 - ...20110505_Thu-1216_0_SIR_PRJ.dv
 - ...20110505_Thu-1241_0_SIR_PRJ.dv
 - ...20110505_Thu-1331_0_SIR_PRJ.dv
 - ...20110505_Thu-1403_0_SIR_PRJ.dv
 - ...20110505_Thu-1436_0_SIR_PRJ.dv
 - ...20110505_Thu-1441_0_SIR_PRJ.dv
 - ...20110505_Thu-1504_0_SIR_PRJ.dv
 - ...20110505_Thu-1511_0_SIR_PRJ.dv
 - ...20110505_Thu-1516_0_SIR_PRJ.dv
 - ...20110505_Thu-1529_0_SIR_PRJ.dv
 - ...20101116_Tue-1159_1_SIR_PRJ.dv
 - ...20101116_Tue-1242_1_SIR_PRJ.dv
 - ...20101116_Tue-1246_1_SIR_PRJ.dv



General Acquisition Preview ExternalAccess

1045_U_SIR_PRJ.dv

Image ID: 1074766
Owner: Susanne Kunis (na) Show all

Image Details

Add Description

Import Date: 2020-08-19 13:47:39
Dimensions (XY): 256 x 256
Pixels Type: float
Pixels Size (XYZ) (µm): 0.04 x 0.04 x 0.13
Z-sections/Timepoints: 1 x 1
Channels: 442.0, 525.0, 615.0
ROI Count: 0
Image Size: 768 KB

Experimentelle Metadaten

openmicroscopy.org/mapr/gene
Added by: Susanne Kunis (na)

Gene Identifier	ENSG00000136861
Gene Identifier URL	http://www.ensembl.org/id/ENSG00000136861
Gene Symbol	CDK5RAP2

openmicroscopy.org/mapr/gene/supplementary
Added by: Susanne Kunis (na)

Gene Symbol Synonyms	CEP215
Gene Annotation Comments	Gene identifiers and symbols from GRCh38.p5, Ensembl release 84, Mar 2016. Added by IDR curators.
Antibody Target	CDK5RAP2-C
Targeted Protein	CDK5RAP2

Tables Attachments 0 Comments 0

OMERO Data History Help Figure Tag Search iBiOS Booked ServiceChat

Search: Susanne Kunis (na)

Training Susanne Kunis (na) Thumbnails

General Acquisition Preview ExternalAccess

Explore Tags Shares Add filter

Susanne Kunis (na)

- Data 5
- FeatureTest
- Fiji 4
- idr0021 10
 - CDK5RAP2-C 33
 - ...5_20110506_Fri-1545_0_SIR_PRJ.dv
 - ...5_20110506_Fri-1559_0_SIR_PRJ.dv
 - ...5_20110506_Fri-1608_0_SIR_PRJ.dv
 - ...5_20110506_Fri-1620_0_SIR_PRJ.dv
 - ...5_20110506_Fri-1633_0_SIR_PRJ.dv
 - ...5_20110506_Fri-1643_0_SIR_PRJ.dv
 - ...5_20110506_Fri-1648_0_SIR_PRJ.dv
 - ..._20110506_Fri-1701_0_SIR_PRJ.dv
 - ..._20110506_Fri-1713_0_SIR_PRJ.dv
 - ..._20110506_Fri-1721_0_SIR_PRJ.dv
 - ..._20110506_Fri-1726_0_SIR_PRJ.dv
 - ..._20110506_Fri-1733_0_SIR_PRJ.dv
 - ..._20110506_Fri-1740_0_SIR_PRJ.dv
 - ..._20110506_Fri-1751_0_SIR_PRJ.dv
 - ...20110505_Thu-1216_0_SIR_PRJ.dv
 - ...20110505_Thu-1241_0_SIR_PRJ.dv
 - ...20110505_Thu-1331_0_SIR_PRJ.dv
 - ...20110505_Thu-1403_0_SIR_PRJ.dv
 - ...20110505_Thu-1436_0_SIR_PRJ.dv
 - ...20110505_Thu-1441_0_SIR_PRJ.dv
 - ...20110505_Thu-1504_0_SIR_PRJ.dv
 - ...20110505_Thu-1511_0_SIR_PRJ.dv
 - ...20110505_Thu-1516_0_SIR_PRJ.dv
 - ...20110505_Thu-1529_0_SIR_PRJ.dv
 - ...20101116_Tue-1159_1_SIR_PRJ.dv
 - ...20101116_Tue-1242_1_SIR_PRJ.dv
 - ...20101116_Tue-1246_1_SIR_PRJ.dv

Original Metadata

Microscope

Image

Objective:

Nominal magnification: 0.0

Immersion: Other

Correction: Other

Show unset fields

442.0

Emission (nm): 442.0

ND filter (%): 0.0

Show unset fields

EXPOSURE TIMES

t	t=1
Delta T	0 s
Exposure	0 s

525.0

Emission (nm): 525.0

ND filter (%): 0.0

Show unset fields

EXPOSURE TIMES

t	t=1
Delta T	2.5 s
Exposure	0 s

615.0

Technische Metadaten

Integration in eLabFTW

OMERO Data History Help Figure Tag Search iBiOs Booked ServiceChat

Search: Susanne Kunis (na)

Training Susanne Kunis (na)

Explore Tags Shares

Susanne Kunis (na)

- Data 5
- FeatureTest
- Fiji 4
- idr0021 10
 - CDK5RAP2-C 33
 - ...5_20110506_Fri-1545_0_SIR_PRJ.dv
 - ...5_20110506_Fri-1559_0_SIR_PRJ.dv
 - ...5_20110506_Fri-1608_0_SIR_PRJ.dv
 - ...5_20110506_Fri-1620_0_SIR_PRJ.dv
 - ...5_20110506_Fri-1633_0_SIR_PRJ.dv
 - ...5_20110506_Fri-1643_0_SIR_PRJ.dv
 - ...5_20110506_Fri-1648_0_SIR_PRJ.dv
 - ..._20110506_Fri-1701_0_SIR_PRJ.dv
 - ..._20110506_Fri-1713_0_SIR_PRJ.dv
 - ..._20110506_Fri-1721_0_SIR_PRJ.dv
 - ..._20110506_Fri-1726_0_SIR_PRJ.dv
 - ..._20110506_Fri-1733_0_SIR_PRJ.dv
 - ..._20110506_Fri-1740_0_SIR_PRJ.dv
 - ..._20110506_Fri-1751_0_SIR_PRJ.dv
 - ...20110505_Thu-1216_0_SIR_PRJ.dv
 - ...20110505_Thu-1241_0_SIR_PRJ.dv
 - ...20110505_Thu-1331_0_SIR_PRJ.dv
 - ...20110505_Thu-1403_0_SIR_PRJ.dv
 - ...20110505_Thu-1436_0_SIR_PRJ.dv
 - ...20110505_Thu-1441_0_SIR_PRJ.dv
 - ...20110505_Thu-1504_0_SIR_PRJ.dv
 - ...20110505_Thu-1511_0_SIR_PRJ.dv
 - ...20110505_Thu-1516_0_SIR_PRJ.dv
 - ...20110505_Thu-1529_0_SIR_PRJ.dv
 - ..._20101116_Tue-1159_1_SIR_PRJ.dv
 - ..._20101116_Tue-1242_1_SIR_PRJ.dv
 - ..._20101116_Tue-1246_1_SIR_PRJ.dv

Add filter

Zoom:

General Acquisition Preview ExternalAccess

Full viewer

Centrin_PCN 1545_0_SIR_PRJ.dv <webclient/?show=image-1074766>

Image ID: 1074766
Owner: Susanne Kunis (na)

Image Details

Add Description

Import Date: 2020-08-19 13:47:39
Dimensions (XY): 256 x 256
Pixels Type: float
Pixels Size (XYZ) (µm): 0.04 x 0.04 x 0.13
Z-sections/Timepoints: 1 x 1
Channels: 442.0, 525.0, 615.0
ROI Count: 0
Image Size: 768 KB

Tags 0

Key-Value Pairs 6

openmicroscopy.org/mapr/gene
Added by: Susanne Kunis (na)

Gene Identifier	ENSG00000136861
Gene Identifier URL	http://www.ensembl.org/id/ENSG00000136861
Gene Symbol	CDK5RAP2

openmicroscopy.org/mapr/gene/supplementary
Added by: Susanne Kunis (na)

Gene Symbol Synonyms	CEP215
Gene Annotation Comments	Gene identifiers and symbols from GRCh38.p5, Ensembl release 84, Mar 2016. Added by IDR curators.
Antibody Target	CDK5RAP2-C
Targeted Protein	CDK5RAP2

Tables

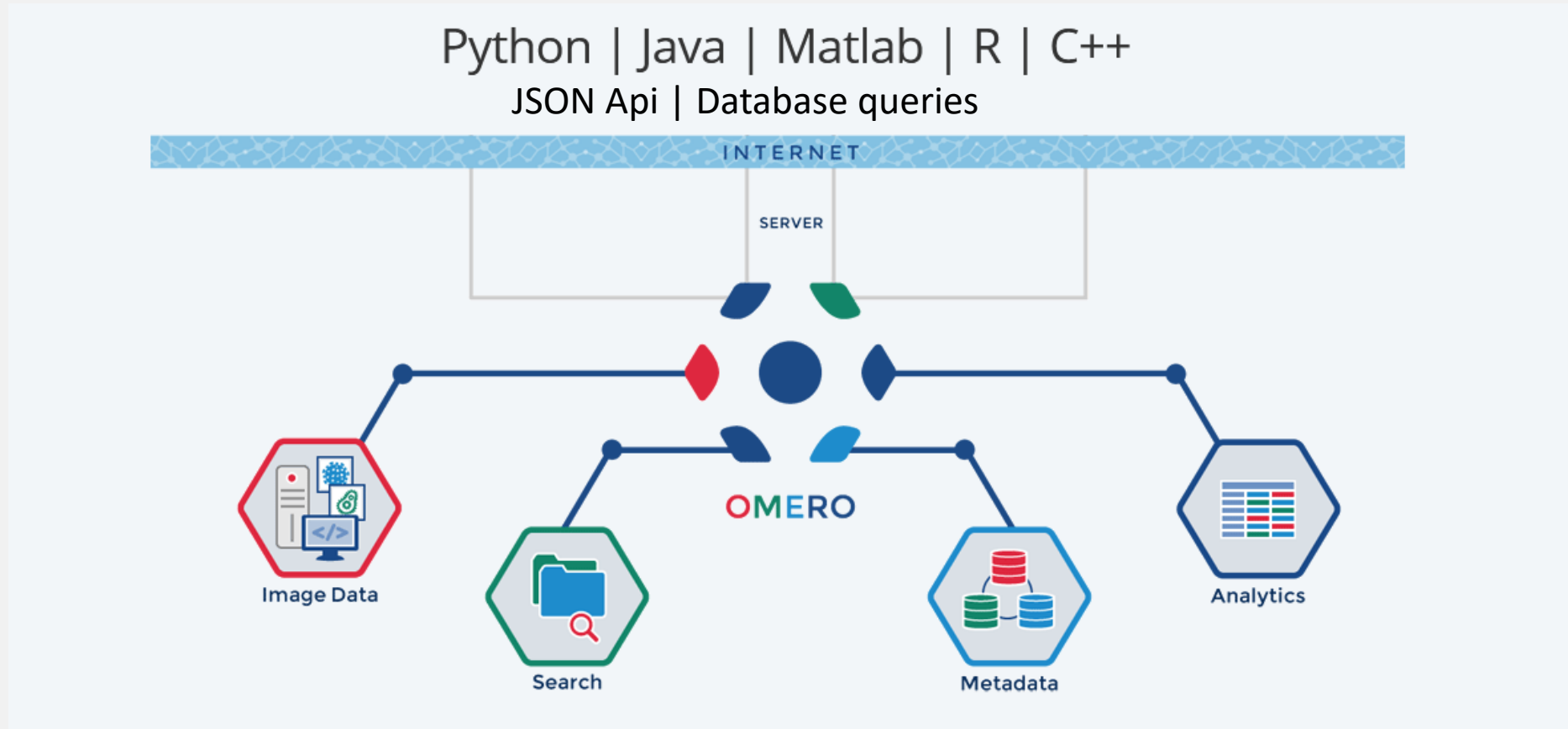
OMERO -eLabFTW

The screenshot displays the OMERO -eLabFTW web interface. At the top, a navigation bar includes the eLabFTW logo and menu items: EXPERIMENTS, DATABASE, TEAM, SEARCH, and DOCUMENTATION. The main content area is titled 'Experiments' and features a 'Back to listing' link. The primary experiment entry is 'idr0021', dated 2021.02.15. It lists the following details: Gene Identifier: ENSG00000136861, Gene Identifier URL: <http://www.ensembl.org>, Gene Symbol: CDK5RAP2, and Microscopy dataset CDK5RAP2-C. A 'Comments' section is visible below the experiment details. A modal dialog box titled 'Insert/edit link' is open in the center, containing the following fields: URL (http://omero.cellnanos.uni-osnabrueck.de/webclient/?show=c), Text to display (Microscopy dataset CDK5RAP2-C), Title (empty), and Open link in... (New window). The dialog has 'Cancel' and 'Save' buttons. A 'SAVE' button is also present on the page below the dialog. On the right side, there are controls for 'Running', 'Team', and 'User', along with a 'Create' button. The footer includes social media icons, a 'USER PANEL' link, and technical information: 'Powered by eLabFTW 3.6.3' and 'Page generated in 0.05119 seconds'. A '3 revisions available' notification is also present.

OMERO -eLabFTW

The screenshot displays the OMERO -eLabFTW web interface. At the top, a navigation bar includes 'EXPERIMENTS', 'DATABASE', 'TEAM', 'SEARCH', and 'DOCUMENTATION'. The main content area is titled 'Experiments' and features a 'Back to listing' link. A sidebar on the left provides details for a specific experiment, including the date '2021.02.15', the ID 'idr0021', and gene information for 'CDK5RAP2'. The central part of the interface shows a file explorer for 'trainer 1' with a list of microscopy datasets. A grid of 40 thumbnail images is displayed, showing various cellular structures. On the right, a detailed view of the 'CDK5RAP2-C' dataset is shown, including its ID (16254), owner (trainer 1), creation date (2020-08-19 14:56:12), and various metadata fields like Tags, Key-Value Pairs, Attachments, Comments, Ratings, and Others. The bottom of the interface includes a 'USER PANEL' and a footer with the text 'Page generated in 0.05119 seconds'.

OMERO API



<https://downloads.openmicroscopy.org/presentations/2021/GBI/OMERO-workshop/#/11>

Erweiterte Integration

eLabFTW EXPERIMENTS DATABASE TEAM SEARCH DOCUMENTATION

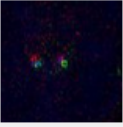
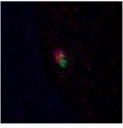
Experiments

[Back to listing](#) Create

2021.02.15 Running Team User

idr0021

Gene Identifier: ENSG00000136861
Gene Identifier URL: <http://www.ensembl.org/id/ENSG00000136861>
Gene Symbol: CDK5RAP2
Microscopy dataset [CDK5RAP2-C](#)

Name	Date	Size X	Size Y	Size Z
 Centrin_PCNT_Cep215_20110506_Fri-1545_0_SIR_PRJ.dv	Mi., 19. Aug. 2020, 17:37	256	256	1
 Centrin_PCNT_Cep215_20110506_Fri-1559_0_SIR_PRJ.dv	Mi., 19. Aug. 2020, 17:37	256	256	1

Last modified on 2021-02-15 14:53:22 Unique eLabID: 20210215-7c076ddf5d4e4d4dad3a7928b9a4bb1935ddf88d

Erweiterte Integration

1. Integration Thumbnail + Core Metadaten
2. Integration technischer Metadaten
3. Integration Benutzer spezifischer Annotationen
4. Erweiterte Suche